

## *Tender Briefing*

***MEMBEKAL, MENGHANTAR, MEMASANG, MENGUJI,  
MENTAULIAH DAN MENYELENGGARA  
PERKHIDMATAN RANGKAIAN LUAS (MYREN)  
UNTUK 20 LOKASI -POLITEKNIK, AKEPT DAN KOLEJ  
KOMUNITI  
KEMENTERIAN PENGAJIAN TINGGI***

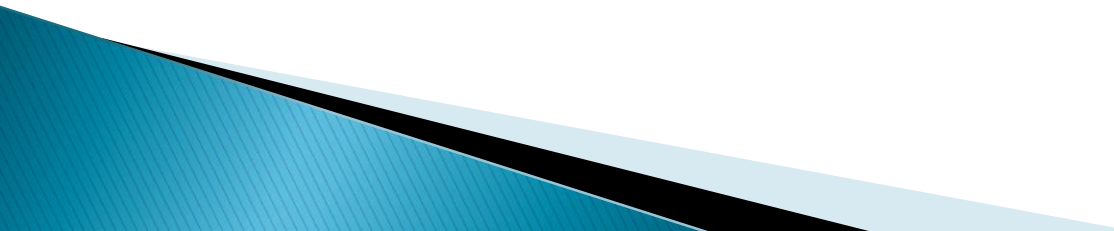
**17<sup>th</sup> March 2011**

# Contents

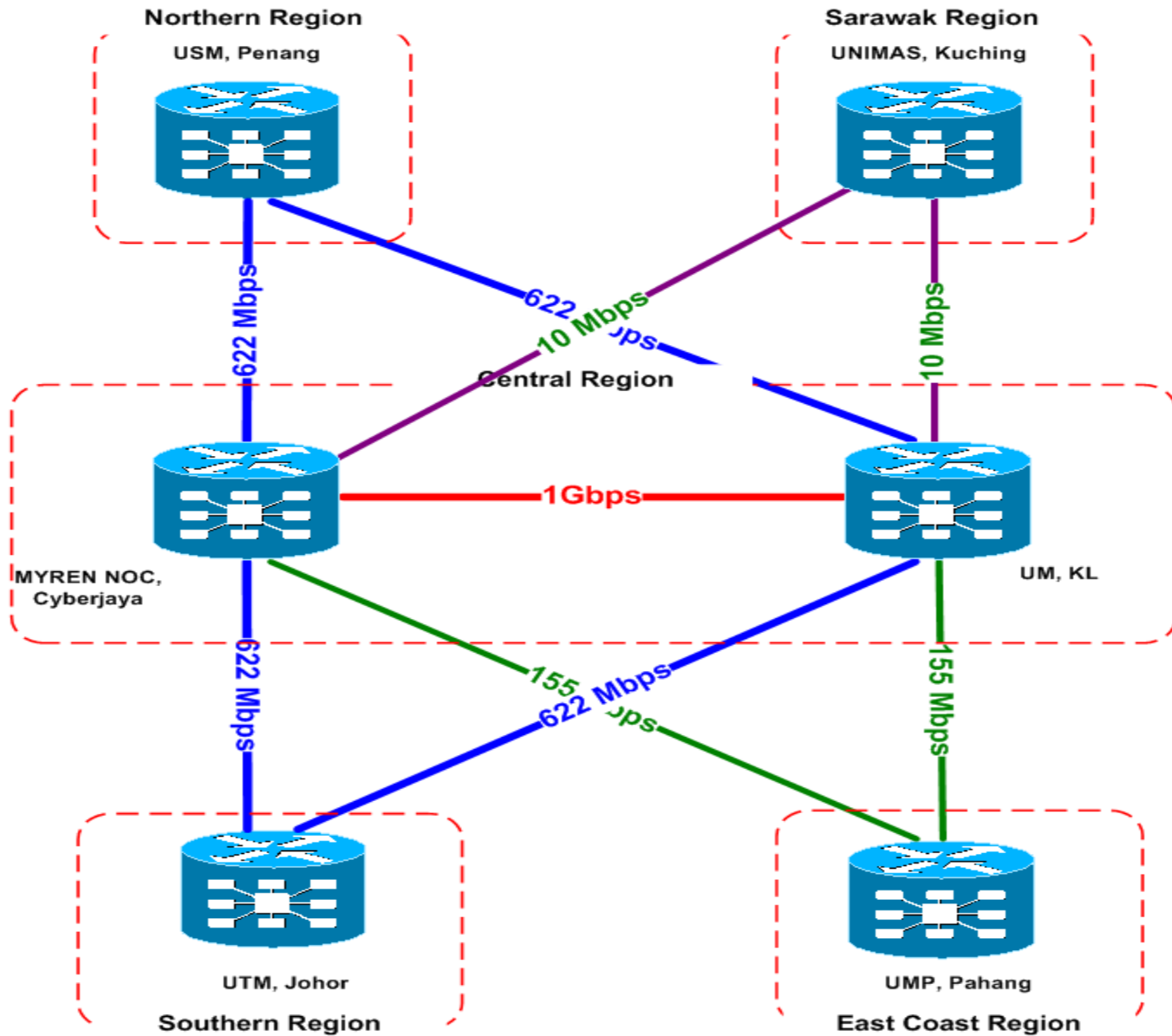
1. Introduction
2. Tender Elements
3. Contact

# Introduction

## Objectives

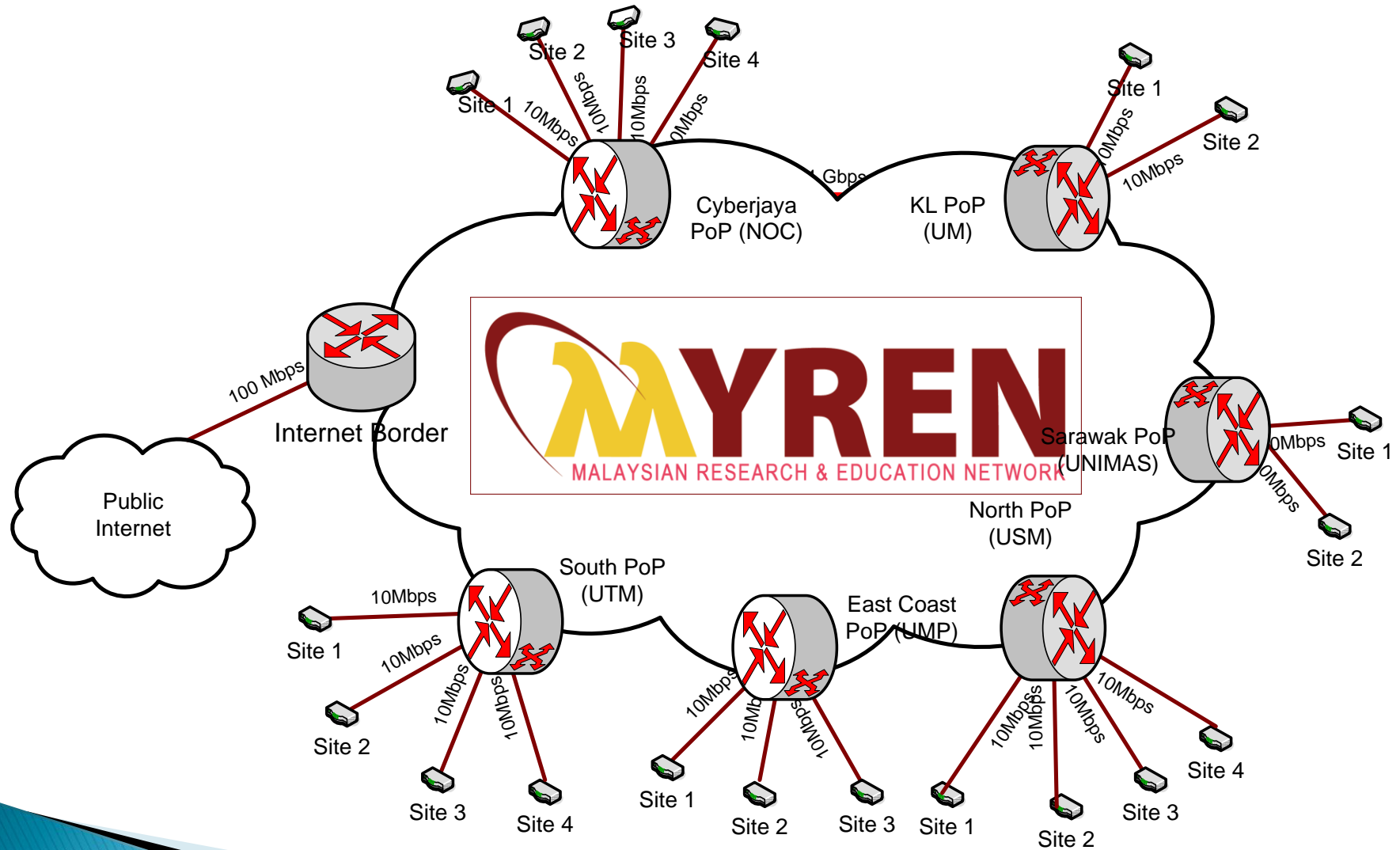
- **Extending the need for a dedicated and managed network for Polytechnics, Community Colleges and other R&E community**
  - **Take advantage of existing MYREN2 network**
  - **To expand MYREN2 Core Network to Sarawak**
  - **To embark on NGN application and services**
  - **To optimally manage inter-institution network traffic as well as internet bound traffic**
- 

# Malaysian Research & Education Network (MYREN)2

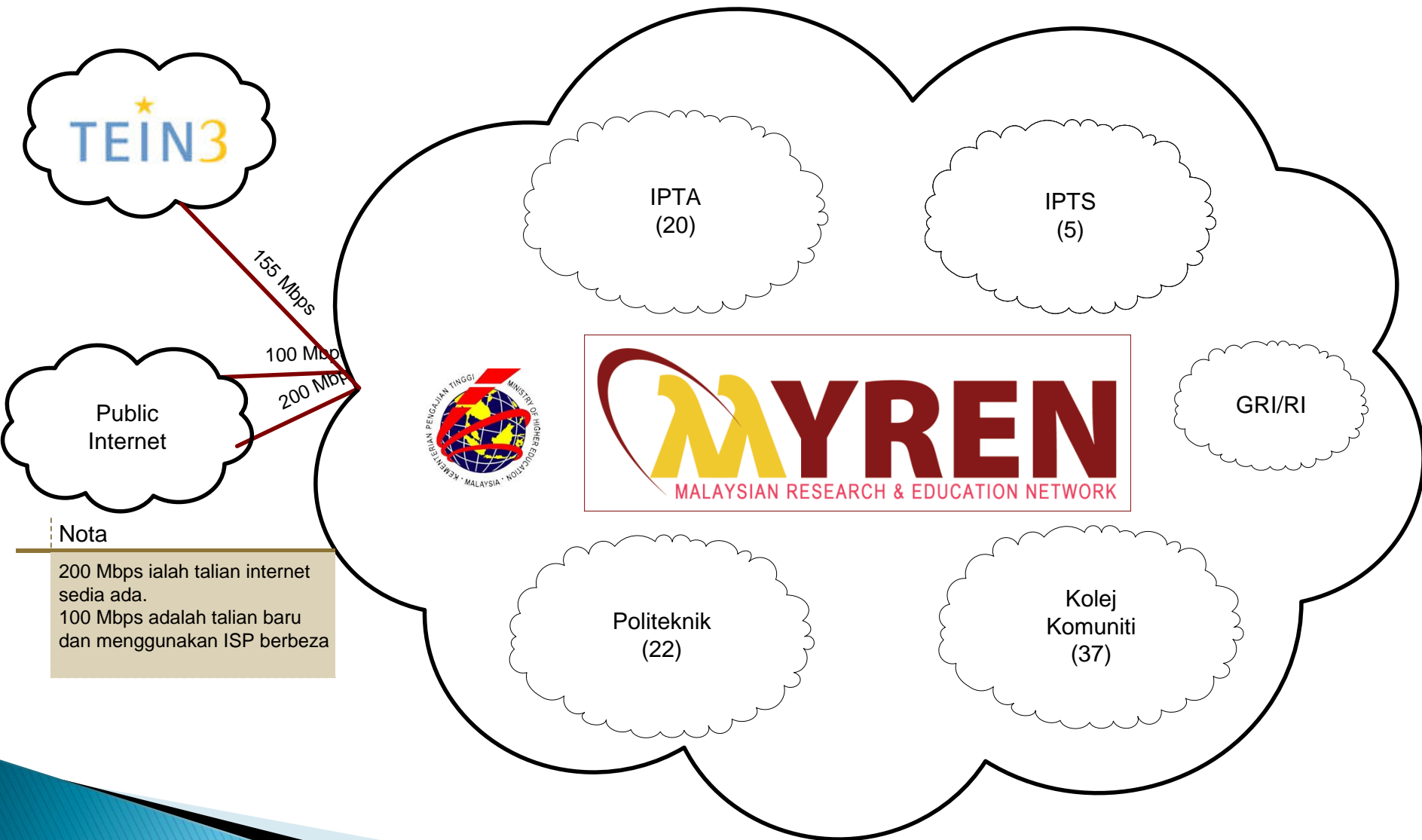


# Polytechnics and Community Colleges

## Overall connection



# Polytechnics and Community Colleges Integration



## Nota

200 Mbps ialah talian internet sedia ada.  
100 Mbps adalah talian baru dan menggunakan ISP berbeza

# Contents

1. Introduction

2. Tender Elements

3. Contact

# Tender Elements

## Connectivity

- Core
  - Connection from CBJ PoP to Sarawak PoP (UNIMAS)
  - 10 Mbps
- Access
  - 19 sites
  - Connection from site to MYREN PoP location
  - 10 Mbps
- Internet Access
  - BGP (Dual Stack IPv4 and IPv6)
  - At MYREN NOC, Cyberjaya
  - Min 100 Mbps (Transit)
  - Must be different from existing provider

# Tender Elements

## Equipments

### ➤ Internet

- 1 location
- Gigabit Ethernet / Ethernet base ports
- BGP, Multicast, Dual stack (IPv4 and IPv6)
- Ability to handle full internet routing table
- Support MPLS

### ➤ Distribution

- 6 sites (Central1, Central2, North, South, Eastern, Sarawak)
- BGP, Multicast, Dual stack (IPv4 and IPv6)
- Ability to handle full internet routing table
- Support MPLS
- Interconnect to MYREN2 PoP

# Tender Elements

## Equipments (cont.)

### ➤ PoP

#### ➤ 1 new site

- Gigabit Ethernet / Ethernet base ports
- BGP, Multicast, Dual stack (IPv4 and IPv6)
- Ability to handle full internet routing table
- Support MPLS

#### ➤ 5 existing sites

- Procurement of cards for existing equipments
- Support this phase expansion
- Mainly SPA, SFP

# Tender Elements

## Equipments (cont.)

- Access
  - 19 sites
  - Gigabit Ethernet / Ethernet base ports
  - BGP, Multicast, Dual stack (IPv4 and IPv6)
  - Ability to handle full internet routing table
  - Support MPLS

# Tender Elements

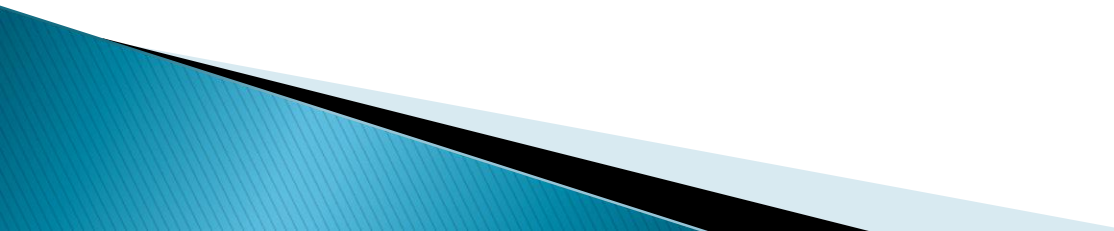
## Please take note

- NSP and NFP license holder is a mandatory
- To include internal wiring and cabling up to MYREN PoP port and Site Equipment
- Integration with Site LAN is mandatory
- Internet Access must be totally different from existing provider (redundancy)
- Full project commissioning in 4 months
- 24 x 7 support a mandatory
- SLA is 99.5 % availability on the link

# Contents

1. Introduction
2. Tender Elements
3. Contact

## **CONTACTS**

- Pn Kamaliah Mohd Kamal  
03 8883 5520
  
  - Pn Sri Lakshmi  
03 8883 5516
- 

**Q & A ?**